

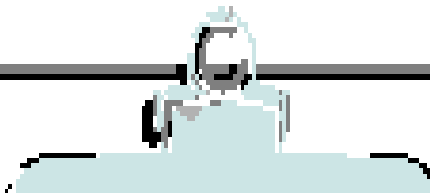
South Central Federation

Newsletter



JANUARY - FEBRUARY, 2014

Member of: American Federation of Mineralogical Societies



A REMINDER

ATTENTION CLUB PRESIDENTS AND SECRETARIES

THE OFFICERS AND EDITOR FORM IS DUE

Officers and Editor Form were sent to all SCFMS Clubs a few weeks ago. It is important for this form to be filled out by your club and returned to Ray Duplechain TO THE NEW SCFMS Executive Secretary.

Ray Duplechain
P.O. Box 82980
Baton Rouge. LA. 70884

Deadline for receiving this form will be:
February 15, 2014

DON'T DELAY -- DO IT TODAY

INSIDE THIS ISSUE

A Reminder	1
Information About The Federation	2
The Nash Rambler	3
From The SCFMS Bulletin Aids Chair	3
Bill's Blotter	4
Safety Report	5
From My Notebook & Tidbit Kimberlite	5
Future Rockhounds Corner	6
Rockhounds Of The Year	7-8
Twenty Facts About Shark Teeth	8
Gene Stirn To Speak At SCRIBE Meeting	9
Petoskey Stones	9
Annual Rock Swap - Austin GMS	10
Ten Commandments For Using Acids	10
Hints & Tips	10
AFMS Judges Training Program	11-12
A Good Year & What Is Calcite?	11
A Note From Uniform Rules Committee	13
AFMS Endowment Fund Raffle	13
Multi-Federations Field Trip	14
From The Editor's Desk	15
Federations Convention And Shows	15
SCFMS Organizations Show Dates	16



LET'S REMEMBER OUR MILITARY TROOPS AND THEIR FAMILIES



SOUTH CENTRAL FEDERATION OF MINERAL SOCIETIES, INC.

SCFMS OFFICERS

President: John Nash
737 FM 254 South
Jasper, TX, 75951
409-384-3974
jonnash1937@yahoo.com

Executive V-P: Bill Halepeska
2804 W. Shandon
Midland, TX 79705
432-425-5670
halepeskbf@att.net

Secretary: Ann James
2738 FM 92 South
Woodville, TX 75979
409-429-7444
earthscache3@yahoo.com

Treasurer: Don Shurtz
4004 Dublin Road
Allen, TX 75003
972-509-2821
don-shurtz@gmail.com

Exec. Secretary: Ray Duplechain
P.O. Box 82980
Baton Rouge, LA 70884
225-978-0031
rayduplechain@hotmail.com

Past President: Virginia Adian
109 Katie Court
Boerne, TX 78006
830-755-6105
v.adian@gvtc.com

PURPOSE

To promote popular interest and education in the various earth sciences, in particular those hobbies dealing with the art of lapidaries and the science of minerals, fossils, as well as their associated fields.

To cooperate with educational and scientific institutions or other groups engaged in increasing knowledge in the earth sciences.

To cooperate with or become members of similar Federations in the United States and elsewhere.

To assist in the formation of earth sciences societies in localities where public interest justifies their formation.

E-MAIL ADDRESS CORRECTION AND CHANGES

It is each members responsibility to send your E-mail Addresses to the SCFMS Editor Paul W. Good, pmgood@verizon.net

NEWSLETTER PUBLISHED BI-MONTHLY

DUPLICATION

Material in this Newsletter may be duplicated for non-commercial purposes providing full credit is given. For Commercial use, the individual author(s) must be contacted for approval.

A NOTE FROM THE EDITOR

The DEADLINE for each Newsletter is the 10th of the following months: January - March - May - July - September and November. As a reminder! Shop hints and tips that are used in this Newsletter, have not been evaluated for safety or reliability by myself. Please use caution and safety when trying out any new idea.

ANNUAL SHOW

The Baton Rouge Gem and Mineral Society, Baton Rouge, LA, will host the SCF Show in 2014, to be held on August 09-10, 2014. So, mark your calendar and plan to be there for that show. We will be having more information about the festivities as time goes on, which are being planned at this moment.

ANNUAL MEETING:

The Federation's next annual meeting will be held on August 09, 2014.

ANNUAL SILENT AUCTION

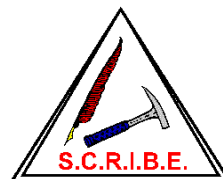
The annual silent auction will be held during the SCF Show and Convention, August 09-10, 2014. Donations are greatly welcomed and needed. Rocks, fossils, minerals, jewelry and hobby related items are among the items needed. Bring or send these items to the show. Proceeds from the silent auction go into the South Central Federation Endowment Fund.

**PLEASE KEEP YOUR
EMAIL ADDRESS UP
TO DATE - CONTACT
PAUL GOOD, EDITOR,
OF ANY CHANGES.**

SOUTH CENTRAL FEDERATION WEB-SITE: WWW.SCFMS.NET

Newsletter Editor: Paul W. Good
150 Nel Court
Kyle, TX 78640
512-268-4555
pmgood@verizon.net

Your Editor is a member of S.C.R.I.B.E.





THE NASH RAMBLER

John D. Nash, SCFMS President



Happy New Year, everybody. May the New Year be good to you.

The New Year signals the time to get the materials ready for the Bulletin Editor's contest. Ray Duplechain has everything ready. Encourage your bulletin editor to check the information for the contest that is listed on the SCFMS web page, www.scfms.org. Contact Ray if you have any questions.

Phyllis George reminds us not to forget the Web Page competition. Information for this contest is available from Phyllis if you need it. Don Shurtz

is the SCFMS Web Master and he, I am sure, has our web page ready for the contest.

Emerson Tucker called my attention to an article in the newsletter of a club from the Rocky Mountain Federation. The club treasurer has decided to pay membership fees to the Rocky Mountain Federation for only "active" members. Emerson's question was what effect this would have on SCFMS. After some thought my response would be "none" since both SCFMS and AFMS base membership fees paid to them on "membership" without regard to designations such as "ac-

tive" or "inactive". Keep this in mind and be prepared for the question if it comes up at the SCFMS Annual Meeting. (Check Article II of the SCFMS Constitution.)

Check for shows in your area. The weather is too nasty to be wading in the creek looking for anything that catches your eye. That is the way rockhounds are. "What is this?" "I don't know." "I like the looks of it so I will put it in my collection." Do you know anyone like this?

John D Nash

FROM THE SCFMS BULLETIN AIDS CHAIRMAN

Ray Duplechain
rayduplechain@hotmail.com

The New Year, 2014, has arrived and it seems only a short time ago that I was writing about our 2013 contest. This past year's contest saw many great articles submitted by various clubs. Many new writers had a chance to share their stories of rockhounding trips and other aspects of gems and minerals. Some wrote great poetry while others found humor in some of their experiences. The top articles in each category were submitted to the AFMS contest. Many placed high and received recognition with trophies and awards.

We are again collecting entries from all the club's newsletters. If you are a club editor, remember deadline to have your club's entries to me is Feb. 15th. All the forms are

available from our Federation Website. Here is the link:
http://www.scfms.net/BEAC_2014.htm

I look forward to receiving your entries and I will keep everyone updated as we progress.

MARK YOUR

FEBRUARY 15, 2014



**DEADLINE FOR THE MARCH-APRIL ISSUE
 WILL BE MARCH 10, 2014**

BILL'S BLOTTER

Bill Halepeska, SCFMS Executive Vice-President

EXPAND, OR NOT!!

We have all heard the story about the mom and pop venture that was going great, so great that they doubled the size of the store. Then they realized that the reason for their success was the small size of the business; after going broke.

Many gem and mineral "clubs" have struggled with the idea of starting, or increasing the size of their shop or club location. Articles which have been published in Rock and Gem, Lapidary Journal, etc. in the past often bear the sad news that the "expansion" project was the ultimate undoing of the organization. Sometime it is caused by internal politics born of the project, while simply the weight of unanticipated financial obstacles was the cause. Whatever the cause, such incidents serve as a reminder that such undertakings are not to be taken lightly. The following case involving our local organization (Midland Gem & Mineral Society, Inc.) could well have (and still could) have an unfortunate outcome.

MGMS acquired a small shop-full of equipment from an estate in about 1960. Space for the "shop" was located in the basement of a mostly unoccupied hotel where it remained until 1967. Shop was moved to a quanset hut, where space was shared

with a small rock shop. So far so good, but in 1973, the site sold, and we were out on the street. In 1983, we acquired an old house which was moved onto a lot owned by Midland County and renovated by club members. A long term lease was signed on the property assuring us of some stability, finally.

Come the early 2000's, and we are limited for space, the building is a disaster, and the urge sets in for a move into a building of our own which would cure our many perceived problems. We purchased a site, but building costs, city code changes, etc., outpaced our ability to acquire the necessary funds. Along came a local group called "Heritage Midland" which was interested in preserving a 100+ year-old early Midland home in an area designated as Heritage Park. They had acquired the property from the local pioneer family who built the home in 1907. Their proposal sold our membership and we entered into a conditional ownership contract in 2008. Times were good and the heritage group helped secure some considerable funding; we were on a roll, and started the renovation project.

All good plans of mice and -----, we all know how that can be, or should, anyhow. Our start-up was followed

shortly by a severe downturn in the country's economic picture. Our funds quickly ran low and contractor's work ceased. Thanks entirely to our members who jumped in to help, we managed to finish weather securing the building. We sold our purchased lot(s) for a good profit and were able to finish a super shop with limited labor costs with member volunteers.

We have weathered the downturn, and things are looking up. Blessed with members with unusual talents and dedication, work is progressing (slowly). Additional funding looks promising, and we look forward to being able to finish the project in the near future. A lovely old home will have been saved for our heritage, and MGMS will have one of the neatest society homes anywhere. Most of this is due to membership loyalty and dedicated volunteers. It's not finished yet, but with this group, anything is possible. I borrow a quote from St. Francis of Assisi who said; "Start by doing the necessary; then do what is possible --- and suddenly, you are doing the impossible."

We invite anyone interested, to stop by and we will give them a tour of the home.

Have a Good one. Bill

WHEN WORKING IN THE SHOP

SAFETY

STARTS WITH YOU

SAFETY REPORT



Look out! And now WATCH OUT!!!



By Owen Martin, SCFMS Safety

This month's safety note is inspired by some observations I've made while working this year in NW North Dakota.

Historically this time of year is fraught with risks associated with walking on snow and ice. My company has sent out safety notices on things like how to "walk on ice" (like a penguin) and how to keep your walkways cleared. Lots of emphasis is placed on "looking out" for slippery spots so that we don't slip and fall and injure ourselves. Makes plenty of sense... right???

Unfortunately a lot of people I've observed during the course of my safety duties have done a great job with respect to walking on ice and snow, however, in the process, have started to neglect other safe behaviors. Most commonly I've seen people looking only at the ground and not at their surroundings (sound familiar to us "field geologist" types). This has resulted in people walking right in front of moving vehicles on numerous occasions. I've also seen people walk into each other, into signs, and even into a plate glass window.

In essence we are exchanging one risk for another. My recommendation is to make sure that you use your other senses, most notably your hearing, to keep aware of your surroundings. Also make frequent stops while transiting icy areas so that you can look at what is around you before continuing your trek!

Have a safe winter and HAPPY NEW YEAR!

Owen Martin

FROM MY NOTEBOOK

by Mary Trammell, SCFMS Past President

"OLD SUPERSTITION USING STONES"

Attached most of the time to a salt dish in olden days was a proving tree. Five to fifteen different stones were used for practical purposes, instead of decorative, which were believed, to detect or neutralize poison in any of the meats or wine served at meals. All royal tables of Europe used them and a great deal of reliance was placed in them.

Stones, one by one were dipped, if poison was present the stone was to sweat or change color. Royalty also had a taster. Despite this, poisoners still were able to practice their craft. Some stone used were corundum (ruby or sapphires), beryl (emerald), cryptocratalline quartz (flint agates).

TIDBIT - KIMBERLITE

Kimberlite is a type of potassic volcanic rock best known for sometime containing diamonds. It is named after the town of Kimberley in South Africa. Kimberlite occurs in the Earth's crust in vertical structures known as kimberlite pipes. Kimberlite pipes are the most important source of mined diamonds today. The consensus on Kimberlite is that they are formed deep within the mantle. Its probable derivation from depths greater than any other igneous rock type. The extreme magma composition that it reflects in terms of low silica content and high levels of incompatible trace element enrichment, make an understanding of Kimberlite petrogenesis important. In this regard, the study of Kimberlite has the potential to provide information about the composition of the deep mantle.

From the internet Wikipedia, to us via NE LA G&M Soc, Sep 24, 2012



FUTURE ROCKHOUDS CORNER

Fossil Fest

By Asas Husain

Author and Illustrator of: Cephalo the Daring Dinosaur



Hi. My name is Asas (A.k.a Ace) and I want to share my amazing time at the Fossil Fest. I have been studying paleontology for as long as I can remember, and this was a spectacular event I will never forget! There was everything an eager youngster like me would ever want! As soon as I entered, I felt waves of excitement pacing through my body. I couldn't wait to see everything. I got a 'passport' and had to fill it out to choose something from a paleontologist's treasure chest. It was harder than I expected, with questions we really had to think about and research. I discussed a few of the topics with paleontologists. This really added to my knowledge!

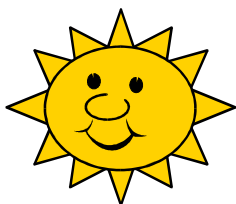
I soon went into the large hall, it was amazing! Dig pits, fossils for sale, Paleontologists talking to grownups and kids about their work. It felt like heaven! I first started a conversation with a paleontologist with a 360 million year old Orthoceras from Morocco. It was inky black, polished and looked like an iron without the handle. I had saved up all my allowance to spend at the Fest and became the excited owner of the Orthoceras! How amazing to have something THAT old!

I then looked around, just to find..... a small 'baby' Xiphactinus fish from the late Cretaceous,. I still had some money left over and bought the fish too! It was certainly my lucky day. Then, my eyes fell on something else, a perfectly preserved, amazing ammonite! I struck up a conversation with the paleontologist who found it and he showed me the spiraling form. My money had run out, so I turned, giving the ammonite back to the paleontologist. My mother saw me do that and came over to buy it for me as a birthday gift (I turned 9 a couple of days ago!) I was then surprised by my mother...she also had a trilobite for me. BEST DAY EVER!

Next.... DIG PIT TIME! I immediately got in line. The timer went on and I had to dig through the pit quickly before my minute was up. I found quite a lot of ancient fossils, in sixty seconds, and it only cost 25 cents! I also participated in 'Fossils Talk' an activity where kids could learn more about different fossils. It was great fun!

My passport was soon filled out. As I showed it to the paleontologist at the counter he said "boy, I love it when they fill it all out!" and he opened his treasure chest, there were a bunch of different, interesting objects, but my choice was: a magnifying glass. Now I can study my fossils even closer! I will never forget this awesome event! Thank you Paleontological Society of Austin! I can't wait for the next Fest!

From the Paleo Newsletter, Jan 2013



Remember
to Reduce,
Reuse &
Recycle



**ROCKY
SAYS:**

PLAN NOW TO ATTEND THE SCFMS
CONVENTION AND SHOW
BATON ROUGE, LOUISIANA
AUGUST 09-10 2014



ROCKHOUND OF THE YEAR

2013

Frank Rowell, SCFMS Chair

MARK WOLBRINK
Gulf Coast Gem & Min. Soc.
Corpus Christi, TX

The Gulf Coast Gem and Mineral Society, of Corpus Christi, TX is honored to name Mark Wolbrink as Club Rockhound of the Year. Mark is a long time member of our club who has contributed many hours to make our club a better organization. He not only serves on the board, but he is our shop co-coordinator, and puts in numerous hours to keep the machines running, supplies ordered and a clean well organized shop. He has headed up the silent auction at our annual show for the last several years, making sure it runs smoothly and items are correctly identified. We appreciate Marks dedication to the Gulf Coast Gem and Mineral Society and the endless hours he puts in.

Submitted by:
Joe Grimes President

Herman Aguilar
Big Spring Prospectors Club
Big Spring, TX

The Big Spring Prospectors Club is nominating Herman Aguilar as rockhound of the year for 2013. Herman has only been a member of our club since 2011, but in that time he has proven to be a valuable member. He has a willingness to learn and share with others. If something is mentioned as needing to be done in the club building he is always the first to offer to do the job or to help. He seldom misses a meeting or any function of the clubs activities. He brings his teenage daughter to our work nights and encourages her in lapidary skills. He always has a smile and an attitude of optimism when he enters the room.

We feel he deserves this recognition.

Sincerely Submitted
Lola Lamb

Tex Irvin
Big Spring Prospectors Club
Big Spring, TX

The Big Spring Prospectors Club would like to nominate Tex Irvin as Rockhound of the Year for 2012. Tex has been a member of our club since 2003. During that time he has always been willing to pitch in and help in any way he can, especially during the annual gem show. He has been an enthusiastic member while learning to identify rocks, making cabs, and sharing his knowledge with others. He is a good ambassador for our club as he travels to area arts and crafts shows selling the knives he makes. He is always boasting about our small club.

We would like to honor him with this recognition.

Sincerely Submitted
Lola Lamb

(Note: The nomination for Tex Irvin was missed last year. Sorry about that.)

ROCKHOUND OF THE YEAR, continued on next page.

DID YOU KNOW?

Petrified wood is a type of FOSSIL, in which the tissues of a dead PLANT are replaced with MINERALS (most often a SILICATE, such as QUARTZ). The PETRIFICATION process occurs underground, when wood or woody materials suddenly become buried under sediment. Mineral-rich water flowing through the sediment deposits minerals in the plant's cells and as the plant's LIGNIN and CELLULOSE decays away, a STONE cast is left in its place

ROCKHOUND OF THE YEAR

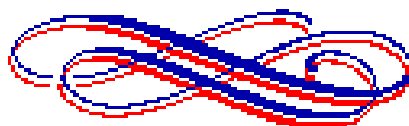
STEVE HILLARD
Fort Worth Gem & Min. Club
Fort Worth, TX

The Fort Worth Gem and Mineral Club is honored to nominate Steve Hilliard as our 2013 Rockhound of the Year. Steve has been a member of the club for many years. He is an avid collector who is always willing to share his knowledge with others through conversations, sharing programs and leading field trips.

Steve has been the dealer chair for a number of years, dealing with the venue, seeking out the best vendors, and creating an inviting atmosphere for our annual show. He has been instrumental in cleaning up the clubhouse this year, attending every workday, cleaning out the training rooms, and working on the saws. The FWGMC acknowledges Steve's many volunteer hours at the clubhouse this year.

Nominated by:
Janice Craddock, Editor

Approved by the:
Fort Worth GMClub Officers
Mary Hilliard, President
Hope Porter, Secretary
Martha Phillips, VP of Programs
Fran Lyod, Treasurer.



TWENTY FACTS ABOUT SHARK TEETH.



1. Shark teeth are not attached to gums on a root like our teeth.
2. Sharks typically lose at least one tooth per week.
3. Sharks lose their teeth because they may become stuck in prey or broken and forced out.
4. Shark teeth are arranged in neat conveyor belt rows and can be replaced within a day of losing one.
5. Sharks average out to 15 rows of teeth in each jaw. Although most have 5 and then there is the bull shark that has 50 rows of teeth.
6. Shark teeth are popularly found as beach treasures because sharks shed 1000s of teeth in a lifetime. Although, don't get yourself in trouble if you decide to collect them. Recently, over 2,400 shark teeth were confiscated from a passenger in India (shark teeth are an illegal import prohibited under the Wild Life Protection Act of 1972).
7. Well after a shark dies and its body decomposes its teeth will fossilize.
8. Fossilized shark teeth are not white because they are usually covered with sediment (which prevents oxygen and bacteria from getting to them).
9. It takes about 10,000 for a shark tooth to fossilize. The most commonly found shark teeth fossils are from 65,000 year ago (the Cenozoic era).
10. Venice, FL (on the Gulf of Mexico) calls itself the "shark tooth capital of the world".

11. Sharks are born with complete sets of teeth and swim away from their mother to fend for themselves.

12. A shark's tooth shape is dependent upon its diet. For instance, the shortfin mako razor like teeth tear flesh, the tiger shark has piercing teeth to cut flesh, and the zebra shark has dense flattened teeth because it feasts upon mollusks.

13. Whale sharks have 3,000 little teeth that are of little use. They're filter feeders that find food by sifting through their gills.

14. The tooth of the megalodon range from 3 1/2 – 7 inches long and can weigh more than a pound!

15. Shark teeth were recently discovered to contain fluoride.

16. Sharks do not suffer from cavities.

17. The inside of shark and human teeth contains a soft mineral known as dentin.

18. The coating of shark teeth is acid resistant and less water soluble than our teeth.

19. Shark teeth and human teeth are equally as hard.

20. Even though many sharks have sharp teeth that could inflict a wound to humans, sharks should always be treated with respect.

(Editors Note: John Nash wrote in the Nov. - Dec., 2013 issue of this Newsletter, about Ann James finding some sharks teeth while they were in Florida, I thought it might be good to have an article about them, which I found on the internet. From the Beach Chair Scientist)



GENE STIRM TO SPEAK AT THE 2014 S.C.R.I.B.E. ANNUAL MEETING

Gene Stirm, the award-winning author, editor and publisher will present a series of tips he calls Face-lifts for Bulletins to rock collecting club editors at this year's Annual Meeting of SCRIBE! In this age clubs are striving to use a professional-looking bulletin to attract and retain members. Gene, a member of the Tehachapi California club, will share his experience with editors for using simple techniques to effectively use typefaces and layout to jazz up and improve readability in bulletins and other printed material.

Gene Stirm, former art director and editor for Josten's American Yearbook Company, brings his experience in



writing, illustrating, publishing and film making to lapidary and rockhound editors. Those editors and guests attending the meeting will leave with solid tools for making their yearbook more professional-looking and easier to read.

The meeting will be from:

9am until 12:00 noon

Saturday, January 25th, 2014

Senior Citizen Center

Moon Mountain Road

Quartzsite, Arizona.

Doors open at 8:30 AM (MST) for registration and coffee.

For information contact Mark Nelson:

mnelsonair@aol.com

PETOSKEY STONES

John Ratcliffe

Petoskey Stones are fossilized colony corals (*Hexagonaria percarinata*). Their origin is traced back to Devonian seas that covered Michigan's Lower Peninsula about 350 million years ago. The soft, living tissue of corals is called the polyp. A limey substance is secreted by the polyp, hardening into corallite -- a skeletal base which supports the polyp and keeps it from being buried alive by bottom debris.

Petoskey stones found in Michigan consist of massive corallas of varying sizes. The limey skeletons were re-



placed by calcite or silica in a cell-by-cell process called petrification.

When glaciers scraped the bedrock surface, fragments of this rock were

carried and deposited elsewhere, primarily in the north half of the Lower Peninsula. In 1965, the Michigan legislature became the first in the nation to select a fossil as its state stone.

Petoskey stones may be found on beaches, road cuts, ditches, gravel pits and sand blows all over the state. Similar fossils of the *Hexagonaria* genus occur in many parts of the world, but the "percarinata" is limited to the Traverse Group.

John Ratcliffe
Ratcliff@mail.ocis.net, Kamloops, BC
 via Pickin's & Diggin's

ANNUAL ROCK SWAP - AUSTIN GEM & MIN. SOC. - April 12, 2014

Les & Susan Postlethwait



Is your calendar empty on Saturday, April 12th 2014?

Well then head into Austin on Saturday April 12 for our annual Rock Swap. New for 2014 the Texas Faceters' Guild will be joining us and bringing with them Texas Topaz Days! We will also

be offering demonstrations for the general public as well as at least one children's activity.

Rocks, minerals, gems, fossils, petrified wood, agates, fluorescent minerals, crystals, rough rock, gift items, jewelry, beads, tools & equipment, local mineral & fossil specimens can be found.

And just in case the mere mention of all those goodies was not enough to entice you to come, we also have a potluck

for our "vendors"! Bring some stuff to swap, bring a potluck dish, bring your sodas, come with your best gneiss joke and join the fun!

To reserve a booth/table contact:
vpresident1@austingemandmineral.org

The gritty details:

Austin Gem and Mineral Society Annual Rock Swap

Date: Saturday April 12, 2014
 Time: 9am to 3pm Set Up: 8am

Place: 6719 Burnet Lane, Austin Texas 78757

Contact Info: vpresident1@austingemandmineral.org
 Phone: 512-458-9546 voicemail only
 Website: www.AustinGemandMineral.org

TEN COMMANDMENTS FOR USING ACIDS

01. Never add water to acid.
02. Never use acid with bleach.
03. Always use acids only in well ventilated areas.
04. Always use inferior specimens for Experimentation.
05. Always use and store acids carefully. Keep well-marked, out of reach of children, and away from tools. Keep oxidizing acids away from flammables.
06. Always keep container of water for neutralizing solutions on hand when using acids.
07. Always treat a spill as if it is the worst acid you are using.
08. Always neutralize solution before disposing of it.
09. Always practice common sense.
10. Never use acid in food containers for food use (i.e: cups glasses, bottles) because they could be mistaken for beverages or foods.

(from
 Rocky
 Review



HINTS AND TIPS

Stones sometimes develop fine, thread like scratches while being polished. These may be due to grit that has penetrated the polishing buff. (One grain will do it.) To clean, hold a strip of soft plywood firmly against the buff. The grit will imbed itself in the wood, leaving the buff clean. I have also heard that a rubber eraser will work too, also a crepe rubber shoe sole.

For that glass finish on tiger eye, polish once, dry the stone then put a drop of vinegar on it. Let it dry a few minutes, then give it a second polish. Hmmm...

From The Redstick Rockhound News
 Feb 2013



AFMS JUDGES TRAINING PROGRAM FOR 2014

DEE HOLLAND, CHAIR



We are excited to bring you the second "on the road" Judges Training Seminar, beginning Thursday, April 10, 2014 through Sunday, April 13, 2014 in OGDEN, UTAH. This is the last of the authorized seminars to be held. In 2013 there was hopes of a seminar but the dates and prices at the location were way out of line for our budget.

I think you will be pleasantly surprised to find the Ogden Best Western; High Country Inn has been gracious in giving us the best prices around, for the money. \$70 per night for either 2 queens or 1 king, and in addition their 'on premises' Jeremiah's restaurant where the seminars will be held in their conference room will astound you with their meals. They will be providing us with lunch on both Friday and Saturday and that is included in the price of the seminar, \$30. But, if you want to try their 'best in the west' pork ribs, or their famous 'deep dish pies', feel free.

They are also offering to extend your visit on either end of the booking if you want to 'see the sights' in the area. Just ask when you make the reservation. **MAKE SURE YOU TELL THEM, "AFMS JUDGES TRAINING"**.

The Weber County Fairgrounds is just down the street and we'll give you a map, (GPS coordinates take you way out of your way) or send it to you in advance if you want to bring your own exhibit for evaluation. You will have to put the exhibit in on Thursday afternoon as the Golden Spike Club's show is three days to accommodate the kids on Friday. Everyone in the club and at the hotel/restaurant is excited you are coming and want to make this event memorable.

Our intrepid "TEACHER" Jay Bowman will again teach the class. It will begin Friday morning at 9AM. (Breakfast on your own, but we suggest Jeremiah's), and end at 4PM. After that you're on

your own to search out other restaurants and then sit around the fire at the hotel. Saturday, Class begins again at 9AM and will end approximately 4PM or sooner, if we are all good. Sunday morning at 9AM at the Fairgrounds we will begin to judge exhibits. On completion, we will evaluate what we have accomplished.

I hope you will all consider attending, it's uplifting and exciting, we promise. And think what you can take home to your clubs. An interest in competitive exhibits is growing, be part of the solution. You must have an AFMS RULE BOOK, 2014. Download from AFMS website: amfed.org

DEE HOLLAND, CHAIR
AFMS JUDGES TRAINING
 beauholland@centurytel.net and or
 shirleyleeson@gmail.com

(Editor's note: The Application Form is on the next page.)

A GOOD YEAR

A brand new year is given us,
 It could be likened to a stone.
 It can be polished and enhanced,
 Or it can be left alone.
 Or we can use the years we have
 In search of love and truth.
 This year can be a better year,
 We can shine it to a glow;
 No year is bad, no year is good,
 Just people make it so.
 Let's plan this year to be our best,
 By sharing love with others
 For peace will never thrive on earth,
 Until we live as brothers.
 From Pegmatite, others, via
 The Roadrunner 1/14 (Author unknown)

What is Calcite?

Calcite is a rock-forming mineral with a chemical formula of CaCO₃. It is extremely common and found throughout the world in sedimentary, metamorphic and igneous rocks. Some geologists consider it to be a "ubiquitous mineral" - one that is found everywhere.

Calcite is the principal constituent of limestone and marble. These rocks are extremely common and make up a significant portion of Earth's crust. They serve as one of the largest carbon repositories on our planet.

The properties of calcite make it one of the most widely used minerals. It is used as a construction material, abrasive, agricultural soil treatment, construction aggregate, pigment, pharmaceutical and more. It has more uses than almost any other mineral.

AFMS JUDGES TRAINING SEMINAR
Thursday April 10 - Sunday, April 13, 2014
Ogden, Utah, Best Western High Country Inn
1335 W. 12th Street, Ogden, UT 84404-5417
PHONE 801-394-9474 FAX 801-392-6589

DEAD LINE: MARCH 25, 2014

This program/seminar is for judges and exhibitors, sponsored by the AFMS. This is the last of three authorized seminars to be held in different Regions each year, and set up in conjunction with a local club and their show. In 2014 at the AFMS meeting in Tulsa, I will ask for an extension of this program.

Please fill out the application below and return to:
Dee Holland, AFMS Judges Training Chair
P.O. Box 23, Tendoy, ID 83468

PLEASE PRINT

NAME _____

ADDRESS _____

CITY _____ STATE _____ ZIP _____

EMAIL _____

REGIONAL FEDERATION _____

CLUB/SOCIETY _____

DIVISION YOU ARE INTERESTED IN

OPEN ___ MINERAL ___ LAPIDARY ___ JEWELRY ___ EDUCATION ___

FOSSIL ___ PETRIFIED WOOD ___ SCRIMSHAW ___ BEADING ___ UV ___

YOU MUST HAVE AN AFMS RULES BOOK, updated to 2014

CLASS SCHEDULE

Thursday evening, 7PM, Welcome at Hotel, High Country Inn

Friday & Saturday 9-5 CLASSES (Lunch on Premises at Jeremiah's)

Sunday Morning 9AM Weber County Fairgrounds, 100 North 1200 West, Ogden, UT

Evaluation of exhibits -- Evaluation of the program immediately following

There is a \$30. charge for the class for everyone, this includes lunch Fri & Sat. Make check out to: Dee Holland and this must accompany the application. If you are staying at the hotel, **YOU MUST MAKE YOUR OWN RESERVATION.** Two Queen or One King, \$70, including tax, etc per night. Tell hotel it is the AFMS Judges Training Seminar. I'm bringing an exhibit for evaluation _____

A NOTE FROM THE SCFMS UNIFORM RULES COMMITTEE

Josie Middleton, Chair

As one of the URC Committee members for South Central Federation, the others being Ron Carman, Ed Gage, and Dennis Gans, I want to let others know that we are available to help **the Society Presidents and Exhibit chairs with displays** but I very seldom hear from anyone. This really saddens me because with exhibits. **Societies** fulfill the tenets by which we exist as a 501(c)(3) tax entity **as well as** an educational facility.

This also brings to mind who will keep our hobby going if we don't help ourselves to exist instead of being just a sales show. It really IS NOT HARD TO EDUCATE THE PUBLIC.... but **we** do make it hard if **we** exclude **our** young folk who will replace us and not show them the beauty that is OUR EARTH. It really is fun to watch the kids compete with each other even in a small

way and not realize how much they learn and connect with the world around them and we need to help them see it.

I am getting discouraged and disgusted with SCFMS and their lack of support. Who is going to take care of our hydrological problems and geological problems facing us if the person to the right or left of you is not concerned then other to purchase an earring set or cab that rock, which is all well and good, but that is not teaching about our Societies, those are only two of the hundreds of aspects to this Hobby.

Yes, **I appreciate that** you agreed to help fund me to do this job, but I get no calls nor do they even think to leave a message and I do return calls! I want to thank the Louisiana Clubs for being more open than most of my closer

Shows that I have traveled to attend and not too many of those had competitive exhibits, but yes, I did see exhibits and the crowds around those were tremendous, so the INTEREST from the PUBLIC is there. We should therefore take advantage of their interest and feed it! I have not even used the money funded to me because I haven't been asked to be anywhere within SCFMS other than the yearly and Regional and National shows! We weren't hardly represented at the National Show in Jacksonville, FL.

Respectfully,
Josie Middleton

Just an added note: I will be attending the AFMS Judging Training Seminar to be held in Ogden, Utah **April 10-13, 2014**. For more information, see pages 11 and 12.

2014 AFMS ENDOWMENT FUND

By Donna Moore, AFMS Endowment Fund Chair

The kickoff for the 2014 AFMS Endowment Fund drawing has been announced in the December issue of the AFMS Newsletter. Donna Moore (mwfsecretary@gmail.com) chairs the fund raising this year. In the SCFMS, tickets can be purchased from:

Catherine Rouchon,
5845 Winchester Ln,
Clinton, LA 70722
(rouchonc@starband.net).



The drawing will be held at the AFMS Banquet, July 14th in Tulsa, OK but you do not have to be present to win.

Some of the items to be won include a framed fossil fish, a Mosasaur tooth, a page of mineral stamps, a Montana agate petrified limb cast, a calcite cluster, and two 2 lb copper floats.

If you would like to donate a prize or want to purchase tickets, contact Catherine Rouchon.

Tickets are \$5.00 each or 5 for \$20.00.

MULTI-FEDERATION FIELD TRIP - MAKE PLANS TO ATTEND NOW!

By Doug True, Field Trip Chair

The town of Terry, Montana may be small, but they are planning on rolling out the red carpet for us as they host the AFMS 2014 Multi-Federation field trip gathering. The dates are July 31 - August 4, 2014, so mark your calendars and get ready to register!

Terry is right in the middle of some of the best Montana rock hounding areas. We'll have numerous trips to the Gravel Bars on the Yellowstone River; productive areas that I've been hunting on annually for 40+ years. Many are accessed only through private property, but permissions have been granted. We'll be hunting for Montana agates, Jasper, Petrified Wood, fossil coral, stromatolites, and numerous other "oddities".

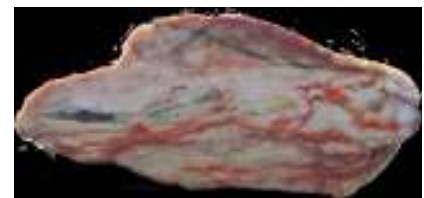


We'll have numerous trips into Montana fossil country to the Pierre and Bear Paw formation areas, and we'll collect ammonites, baculites, scaphites, nautilus and many other shells (70-95 million years old) in the ancient sea bed areas. We are also working on trips to several areas where we can collect dinosaur fossils from the Hell Creek Formation. More information will be forthcoming as plans are solidified. In addition, we'll have an opportunity to take a guided tour through the Eastern Montana Badlands - a once in a lifetime opportunity.

Start planning your collecting vacation now. Kids are welcome!!!! What could be better than four days in Eastern Montana with a chance of collecting wonderful material.

But wait, there's more....The town of Terry is allowing us to use their 2 block city park for dry camping and other activities. We'll have pot luck dinners, a barbecue and much, much more.

For more information contact Doug True, Fieldtrip Chair, (406) 670-0506, or email <dtruefossils12@yahoo.com>



Drop of Water Test for Topaz

Quartz and topaz are not easy to separate by eye, and sometimes it is impossible when the quartz is a true topaz color. There is a big difference in price between the two, and anyone describing quartz as "topaz," however innocently, may well be in trouble.

Topaz is quite a different mineral and is harder than quartz. Because of this, a drop of water will not spread on topaz but will spread on quartz.

Clean the stone as effectively as possible with a cloth or handkerchief to remove all traces of grease. It must be dry before the test. Then place a spot of clean water on it with a thin glass or metal rod. On stones with a hardness of less than 7 on the Mohs scale, the water is dispersed. On harder stones it will remain a globule. The harder the stone, the more rounded will be the globule.

from Rock Chipper, via many Newsletters to us via Redstick rockhound news Nov 2013

FROM THE EDITOR'S DESK

Paul W. Good



Since December 9, 2013, things have really been confusing. Margaret and I traveled on Interstate 35 to the Fort Worth - Dallas area. When we got past Hillsboro, TX we noticed that the people were really making it look like "Winters Wonder Land".

At first we noticed the grass and the roofs of their homes, looked like they had painted them white to get into the spirit of winter. Then when we crossed a bridge we realized that it was covered with ice. The further north we traveled the whiter and deeper it got. So we asked ourselves,



"Did we make a wrong turn and arrive in Indiana?" (The place where we used to live.) Then we saw a sign that

said, Fort Worth, Texas. So, no we did not make a wrong turn.

We arrived at our daughter's house in Bedford and got out of the van and my foot sorta slipped. I reached down and there was a big hunk of ice. It stayed pretty cool while we were there. We returned to our home in Kyle and the temperature was in the low seventies. Wow! What a difference 200 miles makes.

Then on December 25, we went out into the garden and notice a little pile of leaves, so I picked up the leaves and there were 4 little tomatoes on the ground. I looked over at the roses and there must have been 25 or so roses in full bloom... Sometime during the first week of January, I heard my son mowing the lawn. Humm... That settles it. We are not in Indiana, but we are in TEXAS, where the weather changes from cold to hot and hot to cold.

January 10, the temperature is suppose to be in the 70's today, short shirt sleeve weather.

A NOTE TO CLUB PRESIDENTS AND SECRETARIES SOME THINGS TO REMEMBER:

DID YOUR CLUB PAY YOUR SCFMS DUES FOR THIS YEAR?

FIVE CLUBS DID NOT PAY AS YET.

THE FORM FOR OFFICERS AND EDITOR ABOUT YOUR CLUB IS DUE NOW.

THIRTEEN CLUBS STILL NEED TO SEND THEIR FORMS TO THE EXECUTIVE SECRETARY, RAY DUPECHAIN AS SOON AS POSSIBLE.

Thanks to the following for sending articles for this month's Newsletter:

John Nash, Bill Halepeske, Frank Rowell, Ray Duplechain, Josie Middleton, Dee Holland, Les & Susan Postlethwait, Donna Moore, Mary Trammell, and Owen Martin.

That's it for this month. Hope your New Year and your rock trips will be GOOD.

Paul & Margaret

2014 REGIONAL FEDERATION CONVENTIONS AND SHOWS

Eastern Federation
March 29-30, 2014
Plymouth Mtg, PA

California Federation
May 30-June 01, 2014
Pomona, CA

Rocky Mountain & AFMS Federations
July 09-13, 2014
Tulsa, OK

South Central Federation
August 09-10, 2014
Baton Rouge, LA

Northwest Federation
August 15-17, 2014
Hermiston, OR

Midwest Federation
October 18-19, 2014
Des Moines, IA

Southeast Federation
To Be Announced



SCFMS ORGANIZATIONS SHOW DATES FOR 2014

Mary Trammell, SCFMS Show Co-ordinator

January 18-19 2014
Fredericksburg, TX
Fredericksburg
Rockhounds
Lady Bird Johnson Park

January 24-26 2014
Tyler TX
East Texas G&MS
Rose Garden Ctr.

February 15-16, 2014
Georgetown, TX
Williamson Co. G&MS
San Gabriel Park

February 15-16, 2014
Plainview, TX
Hi-Plains G&MS
Ollie Liner Ctr.

March 01-02, 2014
Big Spring, TX
Big Spring
Prospectors Club
Howard Co. Fair Barn

March 01-02, 2014
Robstown, TX
Gulf coast G&MS
Regional Fairgrounds

March 08-09, 2014
Pasadena, TX
Clear Lake G&MS
Pasadena Convention Ctr.

March 15-16, 2014
San Antonio, TX
Southwest G&MS
Events Center
Marbach @ loop 410

April 12-13, 2014
Abilene, TX
Central Texas G&MS
Abilene Civic Ctr.
North 6th & Pine

April 12-13, 2014
Waco, TX
Waco G&MS
Extraco Events Ctr.

April 17-20, 2014
Alpine, TX
Chihuahua G&MS
Alpine Civic Ctr.

April 26-27, 2014
Lubbock, TX
Lubbock G&MS
Lubbock Civic Ctr.

May 24-25, 2014
Fort Worth, TX
Fort Worth G&MS
Will Rogers Mem. Ctr.

May 31 - June 1, 2014
DeRidder, LA
DeRidder G&MS
Beaugard Parish
610 West Street

June 07-08, 2014
Grapevine, TX
Arlington G&MS
Grapevine Convention Ctr.

August 09-10, 2014
Baton Rouge, LA
SCFMS Convention & Show
Baton Rouge G&MS
The Marriott

August 16-17, 2014
Bossier City, LA
Bossier City Civic Ctr.

August 23-24, 2014
Jasper, TX
Pine Country G&MS
Events Center

September 27-28, 2014
Dallas, TX
Dallas G&MS
Restiol Expo Ctr.
Mesquite, TX

October 11-12, 2014
Temple, TX
Tri-City G&MS
Mayborn Civic Ctr.

October 11-12, 2014
Fort Worth, TX
Lockheed Martin
RA Stone Steppers
LMRA Picnic Area
3400 Bryant Irvin Rd.

October 17-19, 2014
Victoria, TX
Victoria G&MS
Community Ctr.
2905 East North St.

October 17-19, 2014
Austin, TX
Austin G&MS
Palmer Events Ctr.

October 25-26, 2014
Glen Rose, TX
Paleo. Soc. Of Austin
Somervell Expo Ctr.
Hwy 67

November 01-02, 2014
Amarillo, TX
Golden Spread G&MS
Amarillo Civic Ctr.
Exhibition Hall

November 01-02, 2014
Midland, TX
Midland G&MS
Midland Ctr.

November 07-09, 2014
Humble, TX
Houston G&MS
Humble Civic Ctr.
8233 Will Clayton Pkway

December 05-06, 2014
Round Rock, TX
Paleontological Soc. Of
Austin
Old Settlers Park
Hwy 29 E
Round Rock, TX

(A note to all club
Show Chairpersons,
Presidents and

PLEASE



over the dates listed for
your show. If you find a
mistake, let me know about
it as soon as possible.

THANK YOU.
Your Editor Paul W. Good